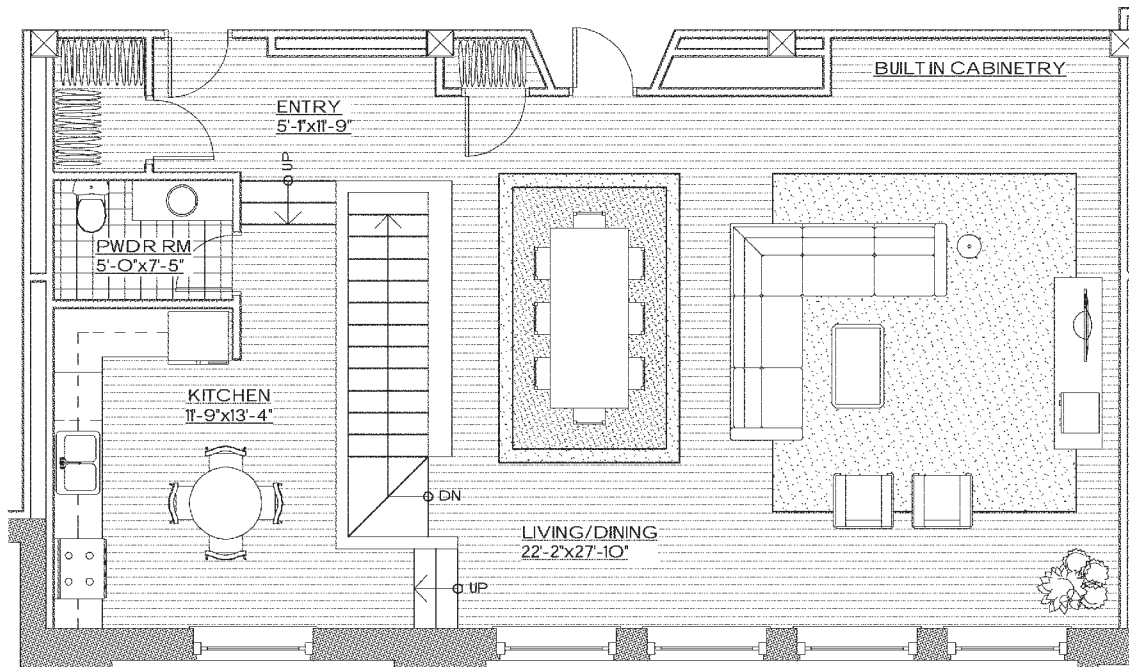


Combination Unit 208 Main Level View

MAIN LEVEL	985 SF
LOWER LEVEL	950 SF
TOTAL	1,935 SF

Square footage is approximate



Features

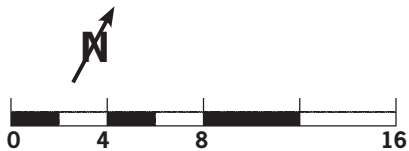
- Combination unit has open main level and spacious lower level with endless possibilities
- Loads of light with 5 large windows
- Built-in bookshelves/cabinets
- Original maple floors on upper level
- 12' 4" ceilings

Architect's View

- 2 large bedrooms
- Raised kitchen area overlooking main room
- 2 baths on lower level - master bath with ceramic tile shower and jacuzzi
- Dramatic sunken patio off master bedroom
- Stairs to lower level

All Units Include:

- 2 outdoor parking spaces - upgrade to covered parking available
- Washer/dryer hookup

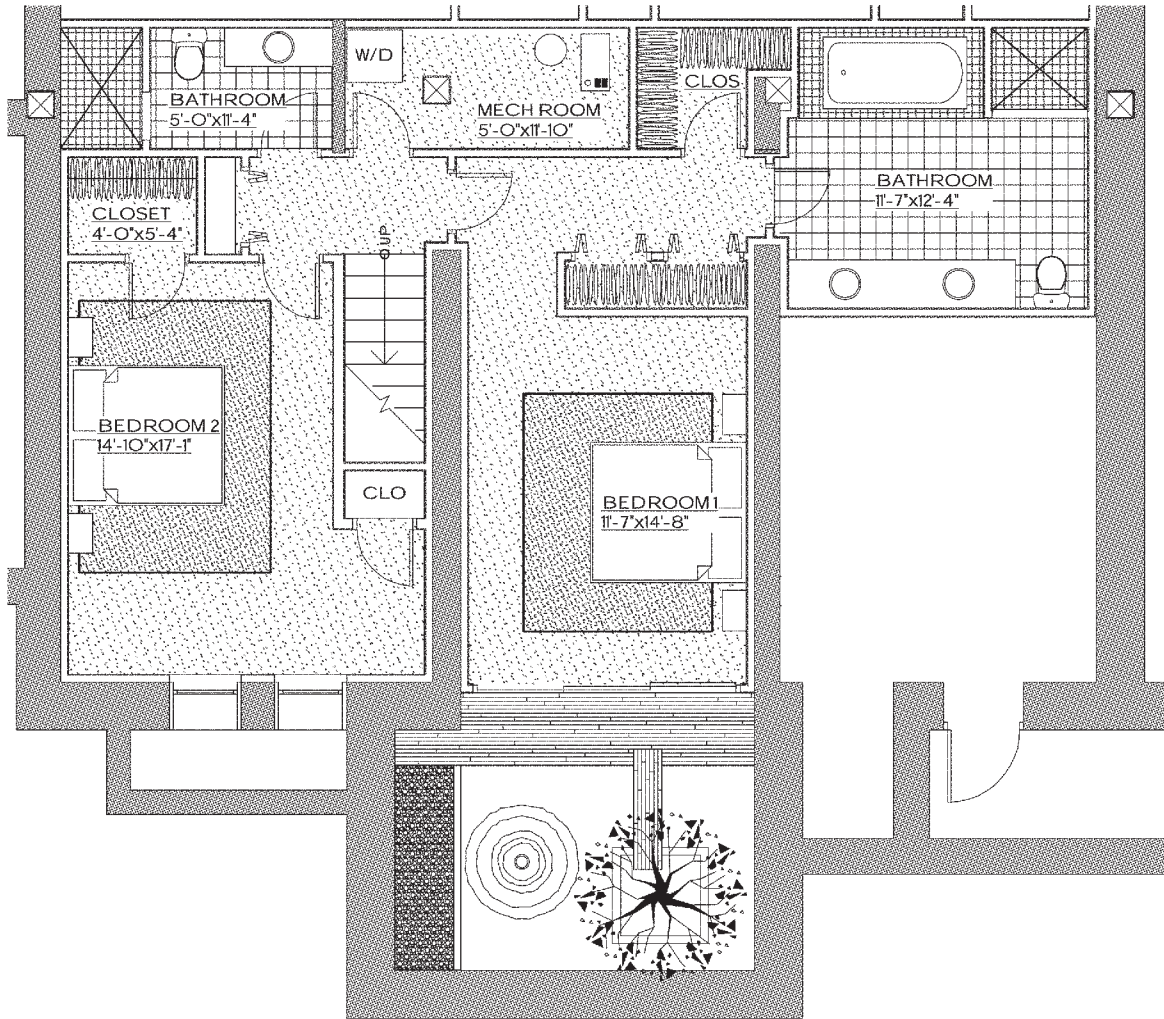


GRANT SCHOOL LOFTS

216 JEFFERSON AVENUE, BELLEVUE, PENNSYLVANIA 15202
412-242-4711 www.grantschoollofts.com

© 2005 Grant School Associates, LP
Grant School Associates reserves the right to revise, change and/or substitute features, dimensions, amenities, specifications, architectural design and detail without notice. This site is for illustrative purposes only and is not part of a legal contract. Any prices are subject to change without notice. Room dimensions are approximate and will change from unit to unit. The site and its contents are protected by the United States copyright law and may not be copied, reproduced or otherwise used in any manner.

Combination Unit 208 Lower Level View



GRANT SCHOOL LOFTS

216 JEFFERSON AVENUE, BELLEVUE, PENNSYLVANIA 15202
412-242-4711 www.grantschoollofts.com

© 2005 Grant School Associates, LP
Grant School Associates reserves the right to revise, change and/or substitute features, dimensions, amenities, specifications, architectural design and detail without notice. This site is for illustrative purposes only and is not part of a legal contract. Any prices are subject to change without notice. Room dimensions are approximate and will change from unit to unit. The site and its contents are protected by the United States copyright law and may not be copied, reproduced or otherwise used in any manner.